



Shenzhen Lanmage Medical Technology Co. Ltd

Address: Lanmage Science & Technology Park, Tangtou Road,
Shiyan Sub-district, Baoan District, Shenzhen.

Website: www.lanmage.com E-mail: oversea@lanmage.com

Tel : (86-755) 6686 9896

©copyright2020 Shenzhen Lanmage Medical Technology Co. Ltd. All rights reserved.

CFDA CE  EN ISO 13485:2016



Smart & Compact

Ergonomic Design and Comprehensive Functions

7200A/B/C/D

Mobile Digital X-ray System



✍ Lightweight and Mobility

🛡 Robust Endurance

∞ Infinite Possibilities



Lightweight and Mobility



Slimmest Body Design in the Industry

With width of only 54 cm, the digital x-ray system can be flexibly used in different circumstances.



The Lowest Equipment Height

The height of complete equipment is only half of an adult, which ensures the technician's sight is not obstructed.



Electric Motion Booster

The function of electric motion booster is specifically designed for female users, enables easy to move the unit with one hand.



Bedside Micro-control

The ending design of x-ray tube enables easier to manage the movement and rotation of the system, and enables it to any positions that users want.



Full-positioning Operation with One-Hand

With one-hand and one-key unlocks the 5-axe simultaneous operation, the x-ray tube supports 360° full coverage and is able to suspend at any height as according to the user requirements.



Superb Incline Movement Ability

The new driving device and super power motor, provides excellent and powerful performance and achieves maximum inclined angle up to 12°.

1

1-Year Power-off Standby
The device can remain in standby mode under power-off status for up to 1 year.

2

Two Exposure Modes
Built-in battery exposure and 220V wall electric exposure.

3

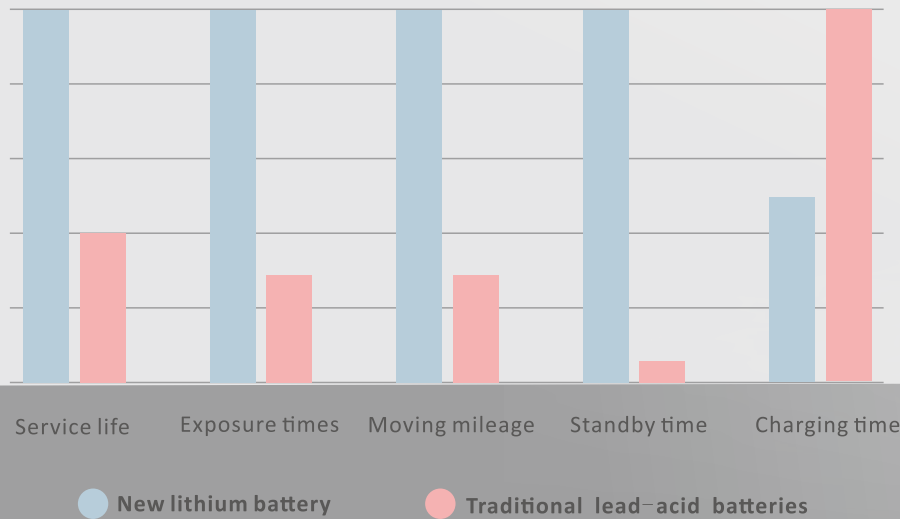
Super-Fast 3-Hours Charging (Optional)
Supports super-fast 3-hour charging mode to charge the battery from 0 to 100%; requires 5 hours for regular charging.

100

100 KM
The device may be moved for at least 100 km on full battery charge.

1500

1,500 Exposures
Supports $\geq 1,500$ exposures on full battery charge (standard adult chest radiograph conditions).



Robust Endurance

Brand new lithium-ion polymer battery and powerful control system support for longer battery life.





Complete Possibilities



Wireless Transmission

Brand-new wireless flat panel detector and 5G network transmission, gets rid of unnecessary cables.



One-plate Sharing (Optional)

Additional portable acquisition system, which enables sharing to other X-ray machine or mobile X-ray machine applications using one plate.



Four Exposure Modes

Hand brake, wireless remote control, software timer and visual console.



Radio Frequency Remote Control

Adopts radio frequency signal transmission with an effective distance up to 15 meters, which avoids signal obstruction due to walls.



High Precision Anti-collision System

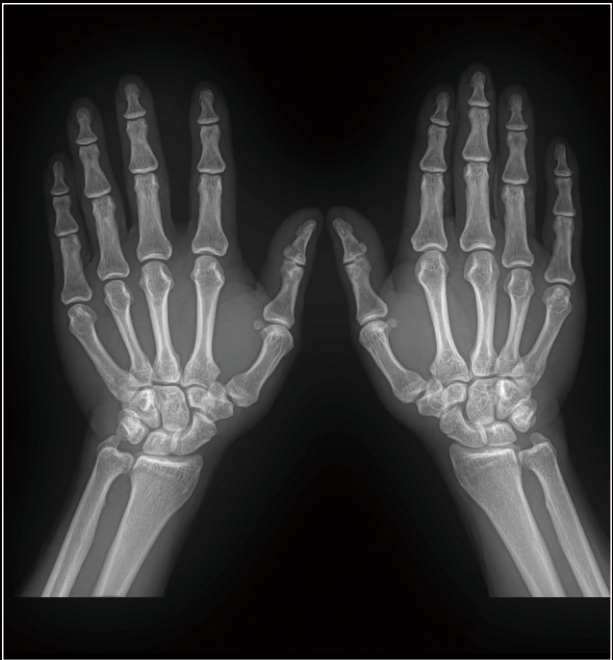
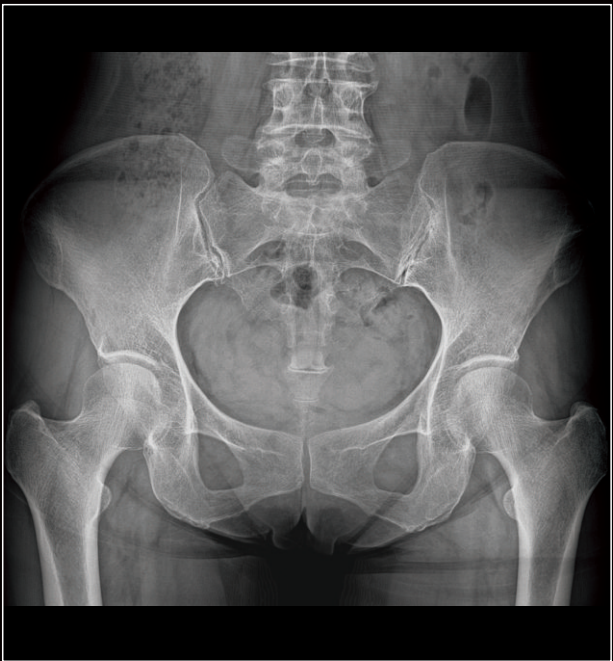
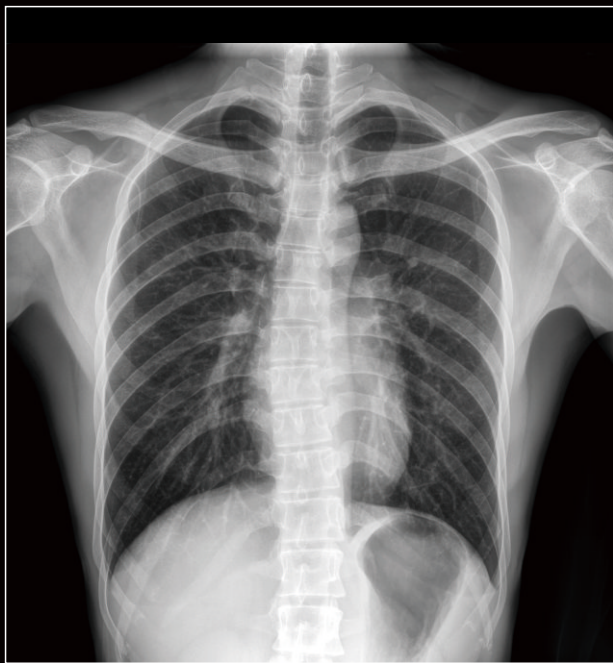
On encountering obstacles, the system applies the brake immediately, effectively protecting the safety of equipment and pedestrians.



Optional chest-radiography stand and mobile imaging bed



DAP system





LINKEDIN



FACEBOOK

Shenzhen Lanmage Medical Technology Co., Ltd.

Manufacturer Address:

Shenzhen Lanmage Medical Technology Co.,Ltd.

No.103, Baguang Service Center,No.2 Baisha Bay Road,

Baguang Community, Kuichong Subdistrict,Dapeng New District Shenzhen

518119 Guangdong P.R.China

Factory Address:

Shenzhen Lanmage Medical Technology Co., Ltd.

1st Floor, Building B, Jingchengda Industrial Park,

Keji No. 4 Road, Langxin Community,

Shiyan Town, Bao'an District,

Shenzhen, China

Website: en.lanmage.com E-mail: oversea@lanmage.com

Tel : (86-755) 6686 9896

©copyright2020 Shenzhen Lanmage Medical Technology Co., Ltd. All rights reserved.

CFDA CE  EN ISO 13485:2016



Smart & Compact

Ergonomic Design

Comprehensive Functions

7200B

Mobile digital X ray system

Lightweight and Mobility

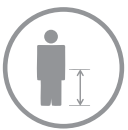
Robust Endurance



Lightweight and Mobility



The Slimmest Shape Design
The width of main body of the digital X-ray system is narrow, which enables it be applied to different areas.



The Lowest Equipment Height
Low height of the equipment ensures the technicians' sight is clear during movement.



The Precise Positioning Control
The bottoms of precise positioning control could slightly and slowly turn the position and direction of the machine for better placement.



Full Dimensional Movement
The control of rotating column and telescopic arm allow the collimator to be suspended on any height in range, and the tube-collimator assembly could cover wide range of rotation.



The Superb Mobility
The function of electric-assisted wheels with handlebar and brake is specially designed for female carriers.
It can be easy moved fast and be controlled on slope, which perform its superb movement control.



Robust Endurance



- 1 One-year Electricity Reserved**
The built-in battery of the system is designed for back-up use on emergency. Moreover, the electrical capacity after a full charge could be reserved for 1 year.
- 2 Two Power-supplied Modes**
The 7200D is powered by an uninterrupted electricity or a built-in battery alternatively. The battery would be fully auto-charged when power connected.
- 3 Super-fast 3-hours Charging (Optional)**
The optional super-fast charging mode could quickly charge the battery up to 100% SOC within 3 hours, which much shortens a regular charging time for 5 hours.
- 600 600 Times of Exposures**
Supports ≥ 600 times of exposures for a fully charged battery(standard adult chest radiography)

